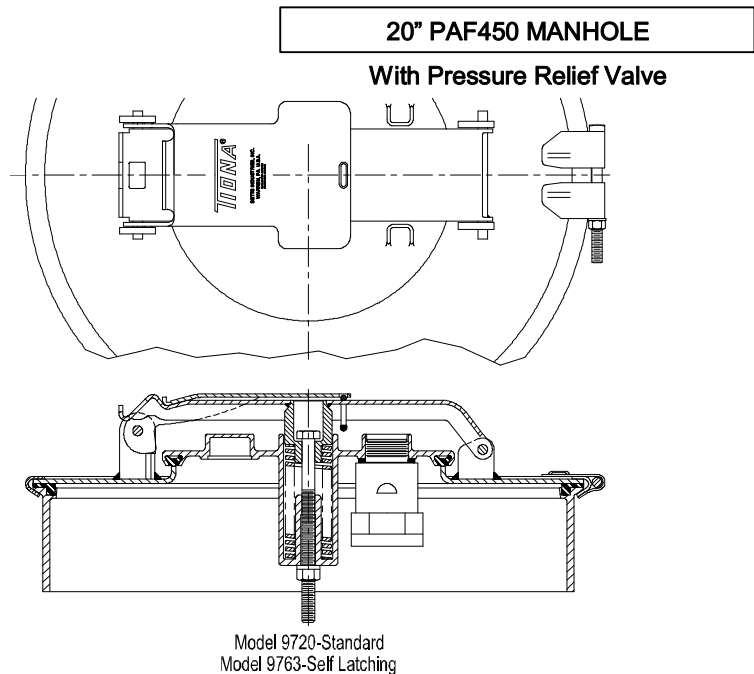




NORMAL VENT
WROUGHT STEEL COVER
SECONDARY SAFETY LATCH
HEAVY DUTY CLAMP RING

Not legal as replacement on
MC306 cargo tanks
after August 31, 1998

Pressure Relief Valve setting 3.0 psig.
Rated Pressure Actuated Emergency Venting:
375,000 cu. ft. free air per hour @ 5.0 psig.



PAF Manholes with Model PAF450 10" Pressure Relief Valve are certified for use on MC306 cargo tanks. Manholes are certified and marked in accordance with 49CFR178.345-5 with test pressure of 36 psig.

Per 49CFR180.405(h)(3), PAF450 assemblies may not be installed on MC306 cargo tanks after August 31, 1998. However, relief valves installed on MC306 cargo tanks on or before August 31, 1998, may be repaired if required. PAF450 relief valves may be installed on non-specification tanks or in tanks built in countries other than the United States where regulations permit.

Relief valve also serves as a 10" latch style fill which can be easily opened for filling the tank or for inspection. Standard features include heavy duty clamp ring, secondary safety latch and model 6238AL Normal Vent.

*No provision has been made for venting of product due to overfilling.

Manholes are also available with a self-latching feature which allows the Pressure Relief Valve cover to open only 91 degrees and drop closed and securely latch upon movement of the tank if the cover is inadvertently left open. For self-latching model substitute 9763 for 9720 in assembly number.

Cover Plate	PRV Cover	Clamping Ring, Bolt & Washer, Strongback, Latch	Clamping Ring Nut	Spring Bolt & Nut	Spring	Normal Vent	Wt. (lb.)	Assembly No.
Steel Zinc Plt.	Alum.	Steel Zinc Plt.	Brass	Stnls 304**	Van Steel	Alum.	29.2	FVA9720BXB
Stnls 304		Stnls 304	Stnls 304	Stnls 304			29.7	FVA9720CXB
Stnls 316		Stnls 304	Stnls 304	Stnls 304			29.7	FVA9720DXB

**Nut Material – Steel Zinc Plated

NOTE: Manhole assemblies, as listed above, have a 6238AL vent (prefix "FVA") and Buna-N (suffix "B"). For variation or additional vents see catalog Section 95 for proper prefix or assembly number. For variation in gasketing change last letter of suffix as follows.

Suffix "V" indicates Viton gasket

Suffix "W" indicates White Hypalon gasket

Suffix "T" indicates Tef-Sil pressure relief valve gasket and Teflon Envelope w/ White Hypalon insert collar gasket

Manhole collars are available in aluminum, steel, and stainless steel. Please see parts page for correct numbers. When welding collars to tank, exercise care to insure collar remains flat and round.

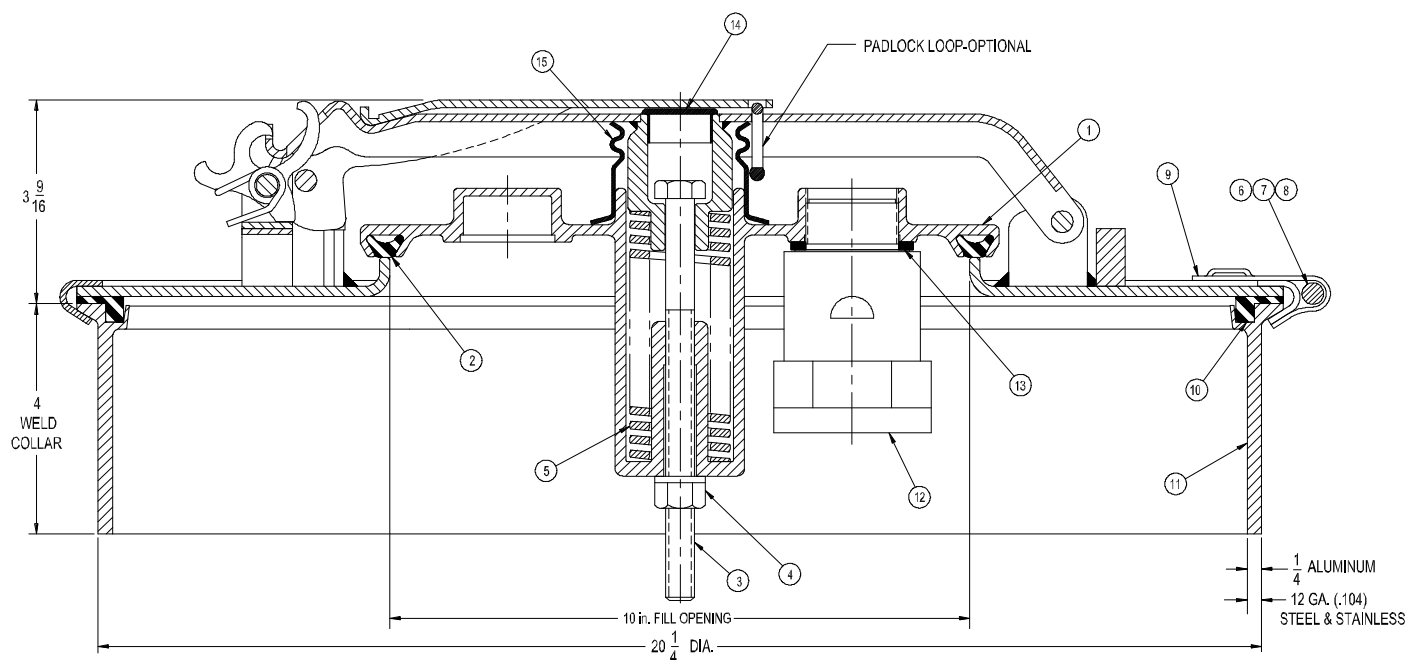


Sept 1998

Section 86 Page 7A

PARTS LIST

20" PAF 450 MANHOLE Self-Latching Model Illustrated



No.	Description	Material	Part No.
1	Cover-Relief Valve	Aluminum	8241AL
1a	Cover (O-Ring Grvd.)	Aluminum	8246AL
2	Gasket-Relief Valve	Buna-N	3119BN
		Viton	3119VT
		Wh. Hypalon	3119WH
2a	O-Ring	Tef-Sil	3902TS
3	Bolt	Stnls 304	3876SL
4	Hex Nut 1/2-13 Thd.	Steel Zinc Plt.	9Q5812
		Stnls 304	9Q5853
5	Spring	Van Steel	3859EY
6	Bolt-Clamp	Steel Zinc Plt.	3029ZC
		Stnls 304	3029SL
7	Nut-Clamp 3/8-16 Thd.	Brass	3030BR
		Stnls 304	9Q5809
8	Washer-Clamp	Steel Zinc Plt.	3031ZC
		Stnls 304	3031SL
9	Clamping Ring	Steel	3036MS
		Steel Zinc Plt.	3036ZC
		Stnls 304	3036SL

No.	Description		Material	Part No.
10	Manhole Gasket Channel Type	B	Buna-N	3560BN
		V	Viton	3560VT
		W	Wh. Hypalon	3560WH
		T	Teflon Env. w/ Wh. Hypalon	3033TF
11	Manhole Collar Channel Type	Steel	3176MS	
		Aluminum	3176AE	
		Stnls 304	3176SL	
		Stnls 316	3176SS	
12	Vent Assembly	Alum/Stnls	6238AL	
13	Gasket	Viton	3716VT	
14	Plastic Cap	Polyethylene	9Z6150	
15	Bellows	Buna-Urethane	4020BU	

Gasket Maximum Temperature

Buna-N (Nitrile)	250°F
Viton	400°F
White Hypalon	250°F
Teflon-Silicone	400°F
Teflon Envelope w/ White Hypalon Insert	250°F

MAINTENANCE: Manhole assemblies should be inspected with sufficient frequency and due regard to the products carried to insure a liquid tight closure. Any worn, damaged or missing parts must be replaced. Gaskets should be replaced if their effectiveness is impaired in any way. Replacement gaskets must be compatible with products carried.

WARNING Use only genuine Betts Industries Inc. replacement parts. Use of substitute parts can impair the proper functioning of the Pressure Relief Valve and Manhole Assembly.

Betts™
INDUSTRIES, INC.
WARREN, PA.

Aug 1997

Section 86 Page 7B